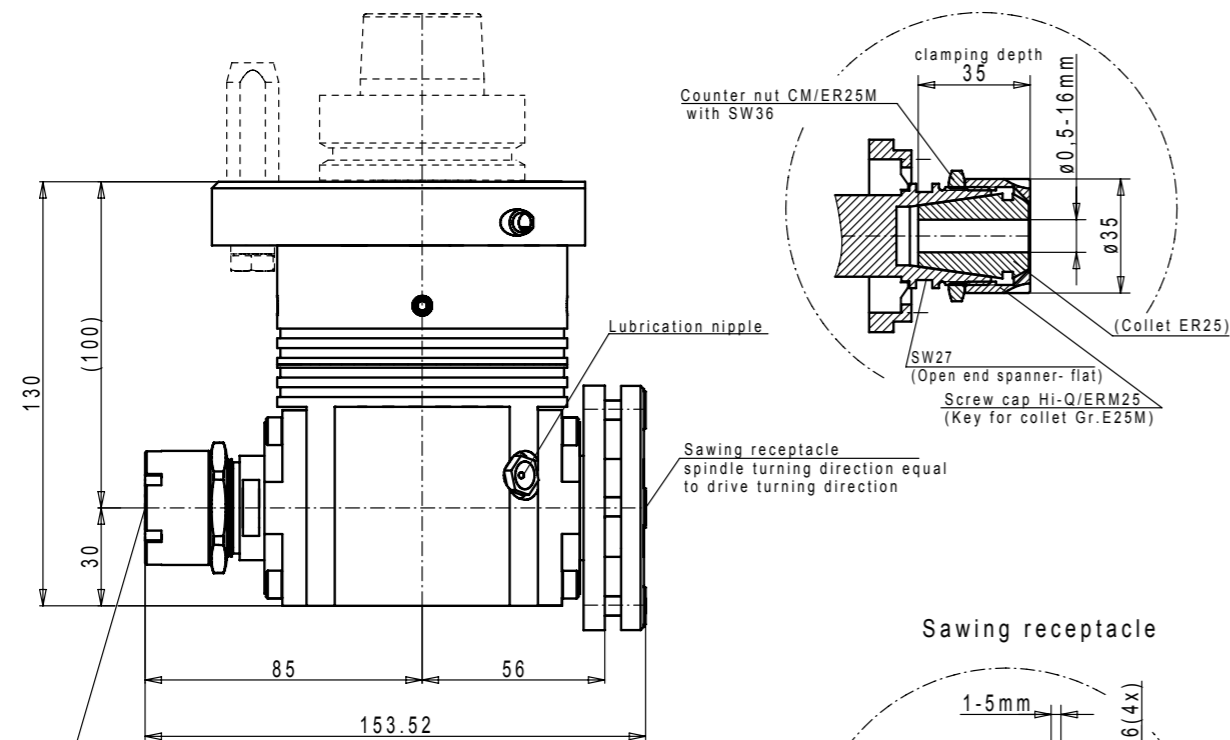


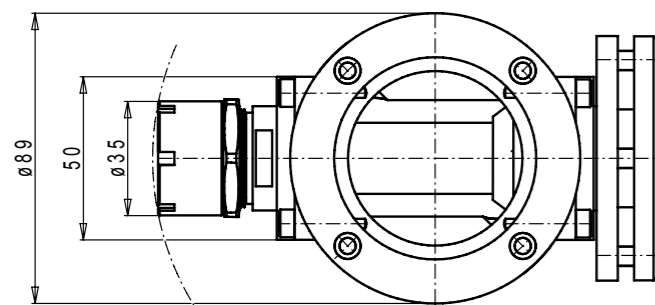
Drive adapter

Standard configurations and machine specific executions upon request

Collet receptacle Hi-Q/ERM25



Collet receptacle Hi-Q/ERM25
spindle turning direction opposite to drive turning direction



Sawing receptacle

Lowering DIN74-Bf6 (4x)
Countersunk screw DIN 7991
(Hex-wrench SW4)

trouble contour $\varnothing 174\text{mm}$

Technical features

Item Id.	EP - 030630
drive turning direction	R.H./L.H.
drive speed max	permanent operation 645 – 10.968 rpm interval operation 645 – 12.903 rpm
number of spindles	1
spindle position	horizontal
tool receptacle	1x Hi-Q/ERM25 DIN6499-C (8°) for collet ER25 DIN 6499-B ($\varnothing 0,5$ - $\varnothing 16$ mm) 1x $\varnothing 30$ mm – clamping area 1,0 – 5,0 mm
turning direction of tool receptacle	1x equal to drive turning direction 1x opposite to drive turning direction
gear ratio	1 : 1,55 – wheel drive
spindle speed	permanent operation 1.000 – 17.000 rpm interval operation 1.000 – 20.000 rpm
max. spindle capacity	3,0 kW
weight with drive adapter	approx. 4,80 kg

Optional accessories:

Hex wrench SW4	Item Id. 138040
Key for collet E 25M	Item Id. 137002
Open end spanner SW 27 flat	Item Id. 131027
Open end spanner SW 36	Item Id. 131036
Lubrication press	Item Id. 980003

Attention:

We point out that the tools must be permitted for the speed you chose!

Example: Milling cutter in the collet receptacle runs 17.000 rpm and the **NOT** dismantled saw blade is, for example, only permitted for 8.000 rpm.

In such cases the saw blade **MUST** be dismantled!

The use of saw blades up to a maximum diameter of 300 mm is possible with the angular heads of the series G06. The freewheeling of the saw blade has to be observed respectively the max. diameter has to be limited correspondingly - both depending on the drive adapter and the drive cover contour (customer's part).

Variants on demand!

